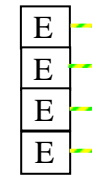
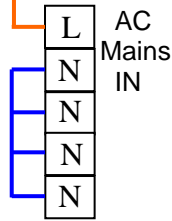
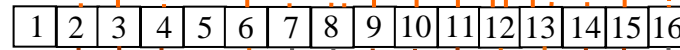
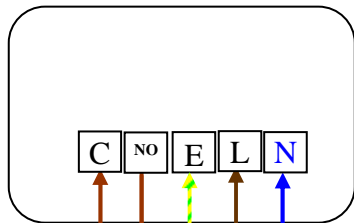


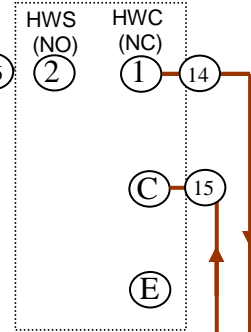
# 3 Port Motorised Valve System (Y – Plan) with ST320RF receiver

Wiring Centre Model No. TC 100

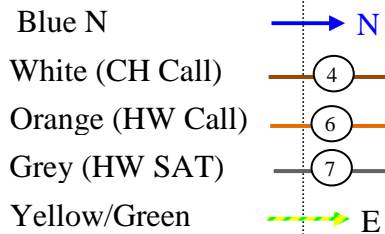
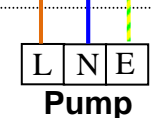
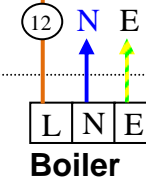
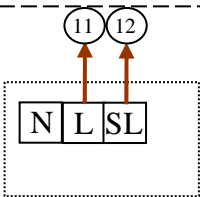
ST320RF Receiver Room Thermostat



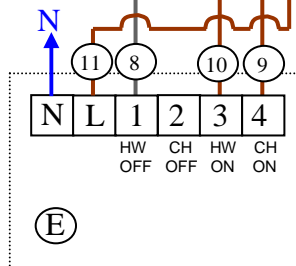
Cylinder Thermostat Model No. CT100



Optional Frost Thermostat Model No. FT100



**Motorised valve**  
Model Nos.  
SP/SBMV32, SBMV38



**Programmer**  
Model No.  
EP200/SP220

**Note**

Links shown ..... Should be made by the installer

**Warning**

Salus Controls plc. accepts no liability for any loss or damage arising from any errors or omissions that may be inadvertently contained within this diagram.